

BEEKLEY®

# Skin Marking System for Mammography



Oncology Imaging Systems

# The Beekley Skin Marking System for Mammography

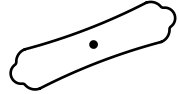
The Beekley Skin Marking System for Mammography offers radiologists a simple and effective way to identify nipples, raised moles, surgical scars, palpable masses and non-palpable areas of concern or pain. As a result, interpreting mammograms may be faster and more accurate, helping you save more lives.

The system consists of five different Beekley Medical skin markers, each with a distinctive and unmistakable shape to interpret on an image. A circle appearing on the image could only mean one thing - a raised mole. A line indicates an area of previous surgery, a triangle symbolises a palpable mass, a solid dot is used to mark a nipple and a square to mark non-palpable areas of concern or pain.

Breast imaging centres around the world using the Beekley Skin Marking System for digital, analogue and tomosynthesis mammograms report better communication, fewer questions, fewer additional views and permanent documentation.

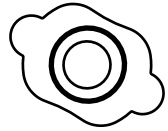
**Nipple Markers** .....

*Used as a reference to identify nipple location*



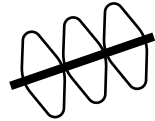
**Mole Markers** .....

*Indicates if raised moles or nevi are present*



**Scar Markers** .....

*Clearly defines a scar from previous surgery*



**Palpable Mass Markers** .....

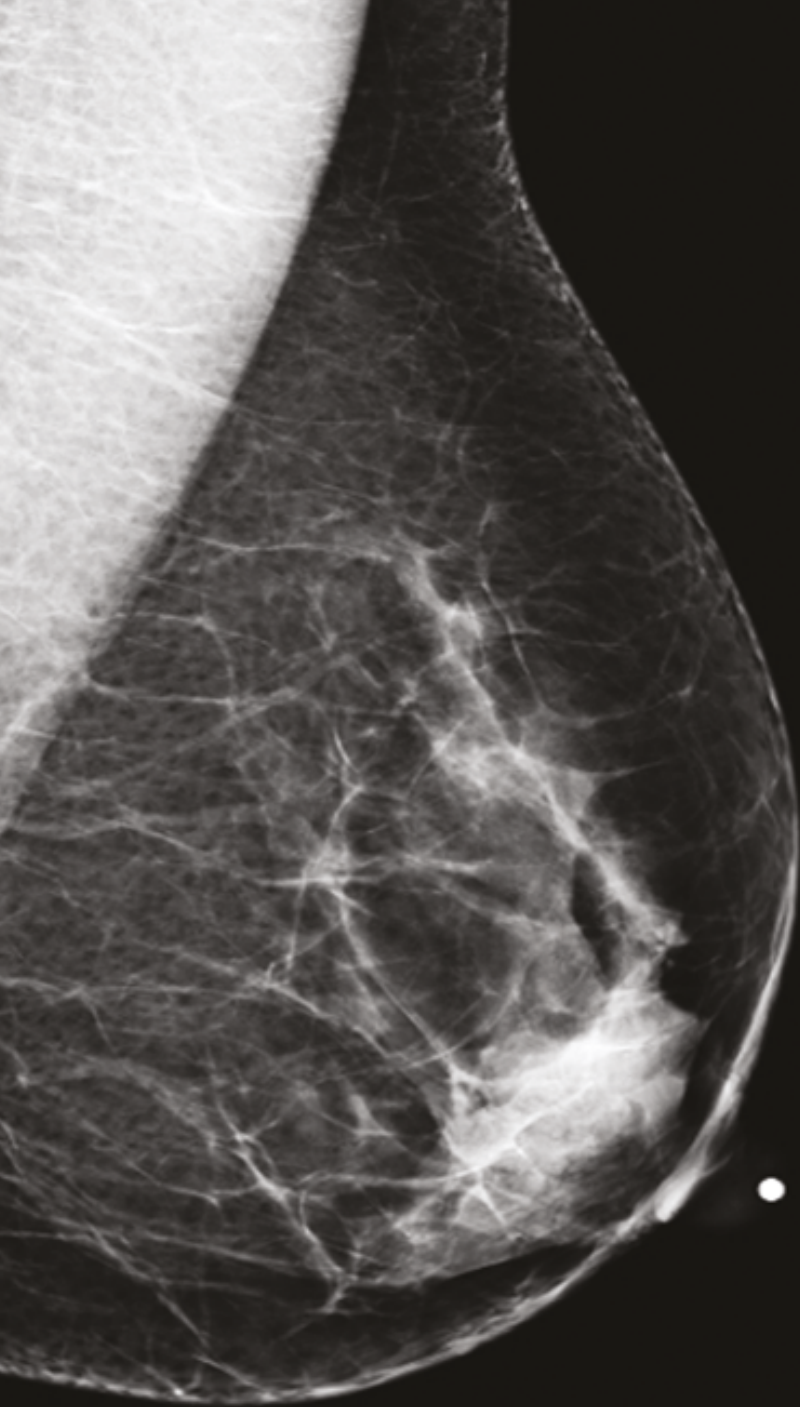
*Identifies the location of a palpable abnormality*



**Area of Concern or Pain Markers** .....

*Communicates an area of concern or focal pain*

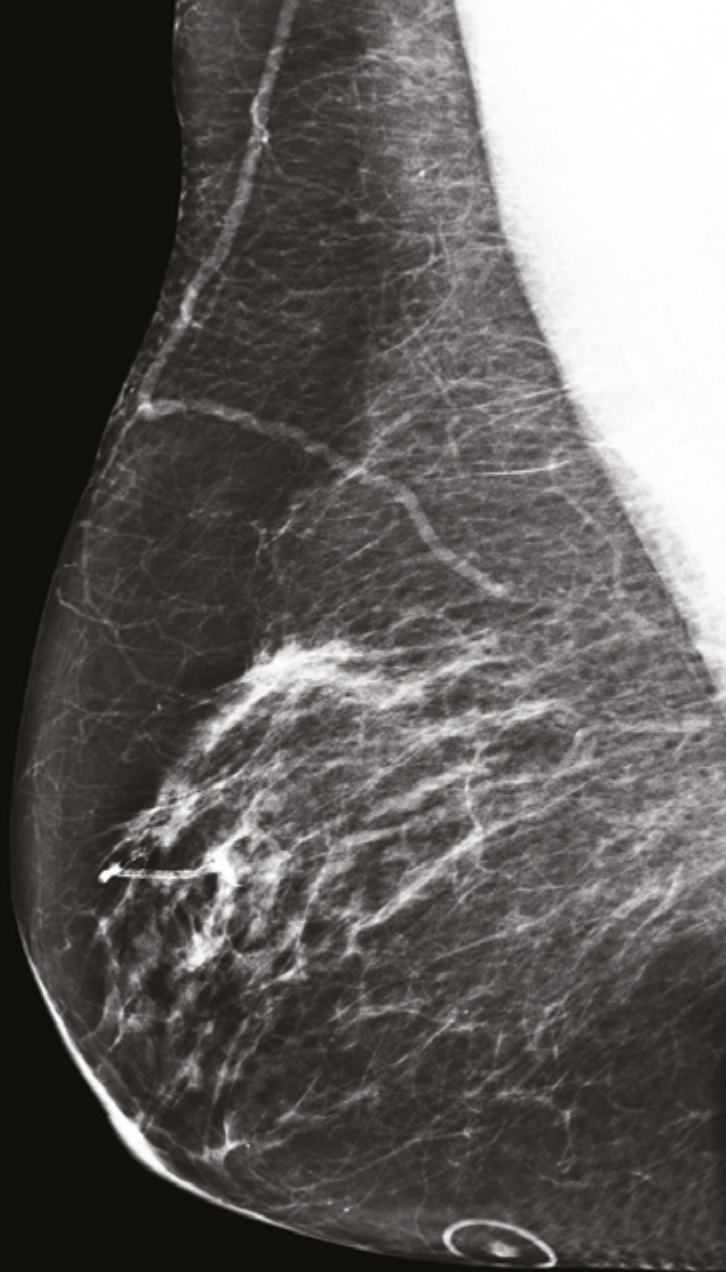




# Beekley N-SPOT® NIPPLE MARKERS

**How does a nipple marker improve accuracy when used on every single patient?**

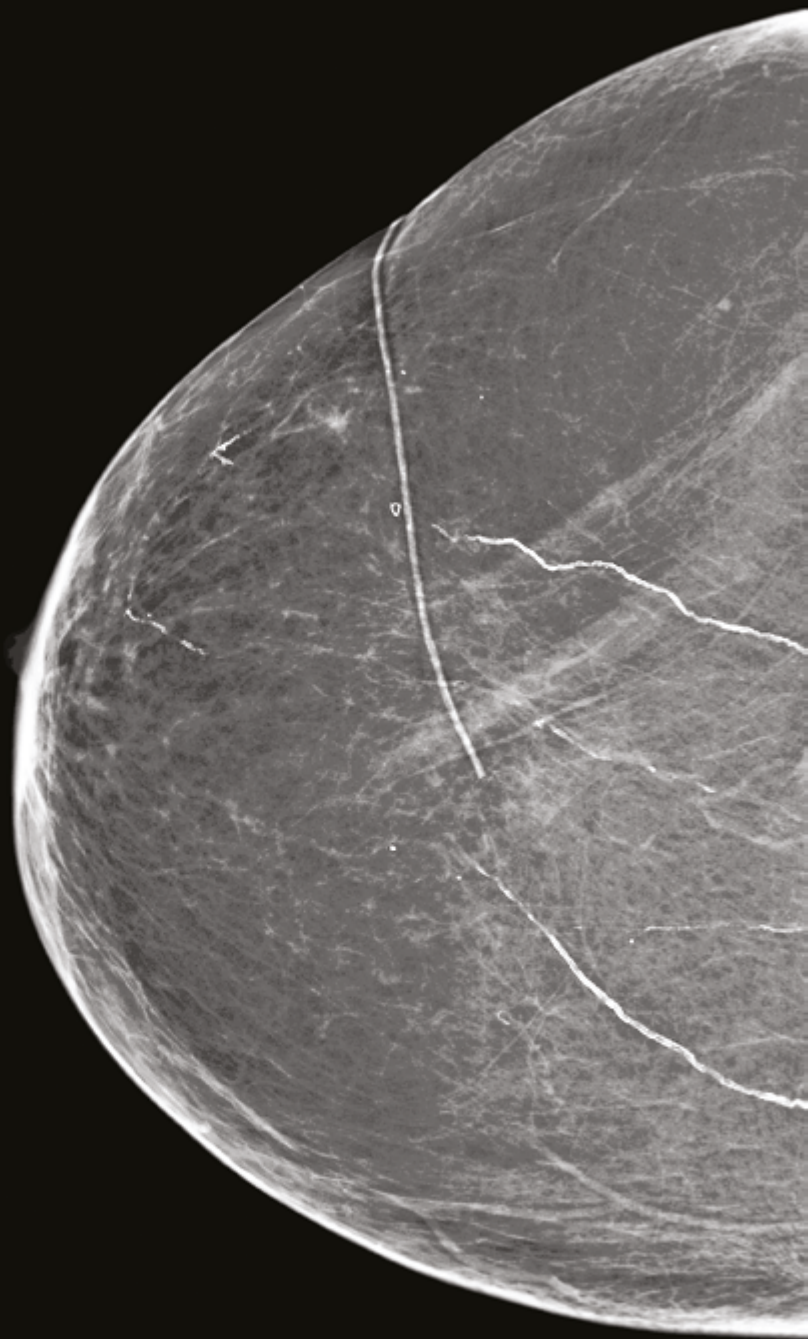
- A marked nipple acts as a landmark to help measure the nipple-to-lesion distance. This highlights the precise location of the suspected lesion.
- Promotes good positioning and verifies nipple is in profile.
- Makes certain the shadow of the nipple out of profile is not mistaken for an inframammary lesion.
- Aims to differentiate a cancer or area of concern located posterior to the nipple.
- Records and simplifies year-to-year comparisons of historical charts.



# Beekley **O-SPOT**<sup>®</sup> MOLE MARKERS

## How does a mole marker save time?

- The mole marker signals that the soft density highlighted by the ring corresponds to an identified mole that is not of concern.
- The soft tissue image of a raised mole is consistently captured within the center of the marker.
- Beekley Medical mole markers are offered in ultra-sheer and low density variants, allowing all tissue detail and calcifications to image within the shadow of the marker.
- The communication on the mammogram becomes a clear and permanent part of the patient's record when images are transferred to another location.

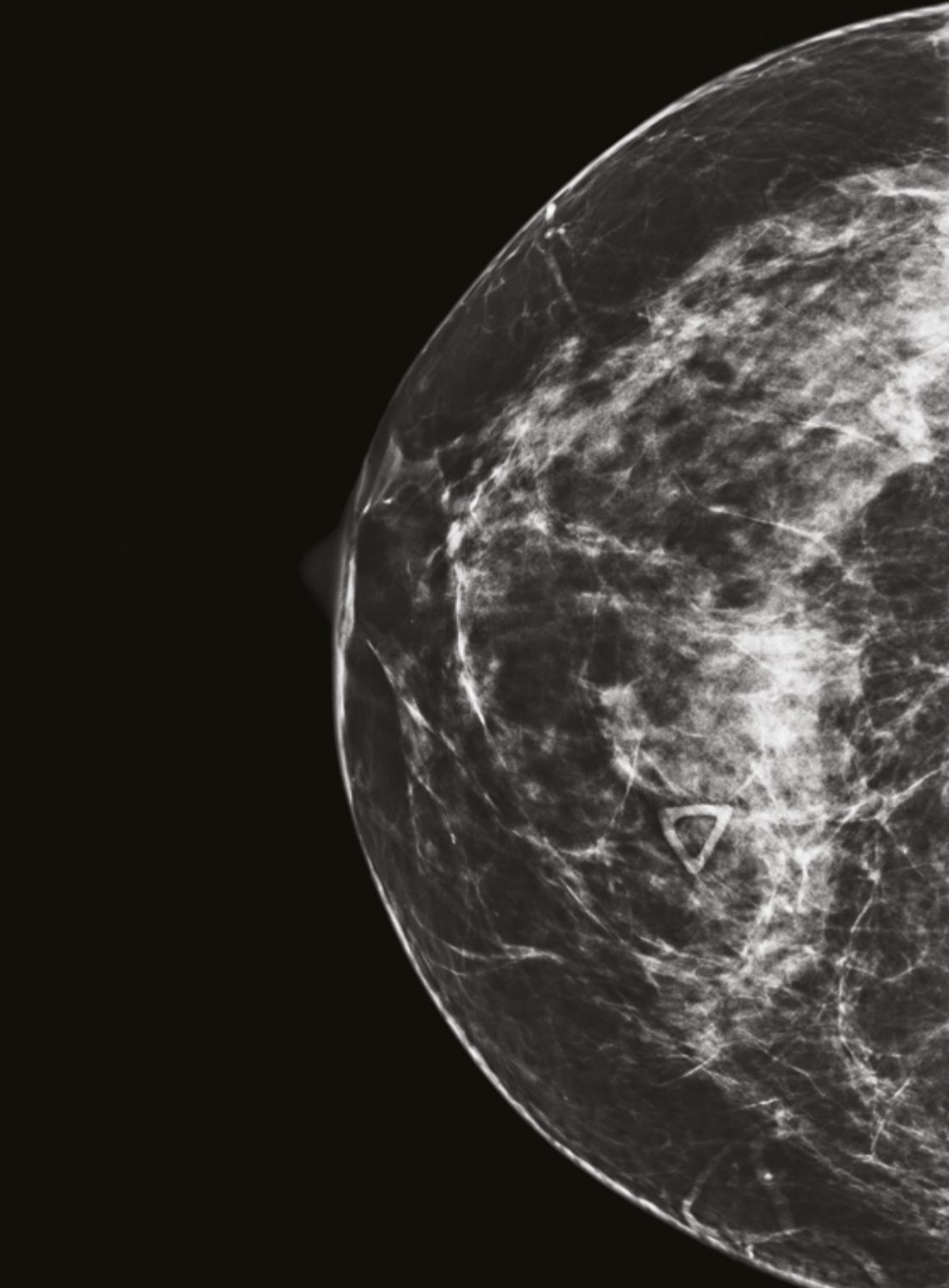




# Beekley **S-SPOT**® SCAR MARKERS

## How does a scar marker supplement a written history?

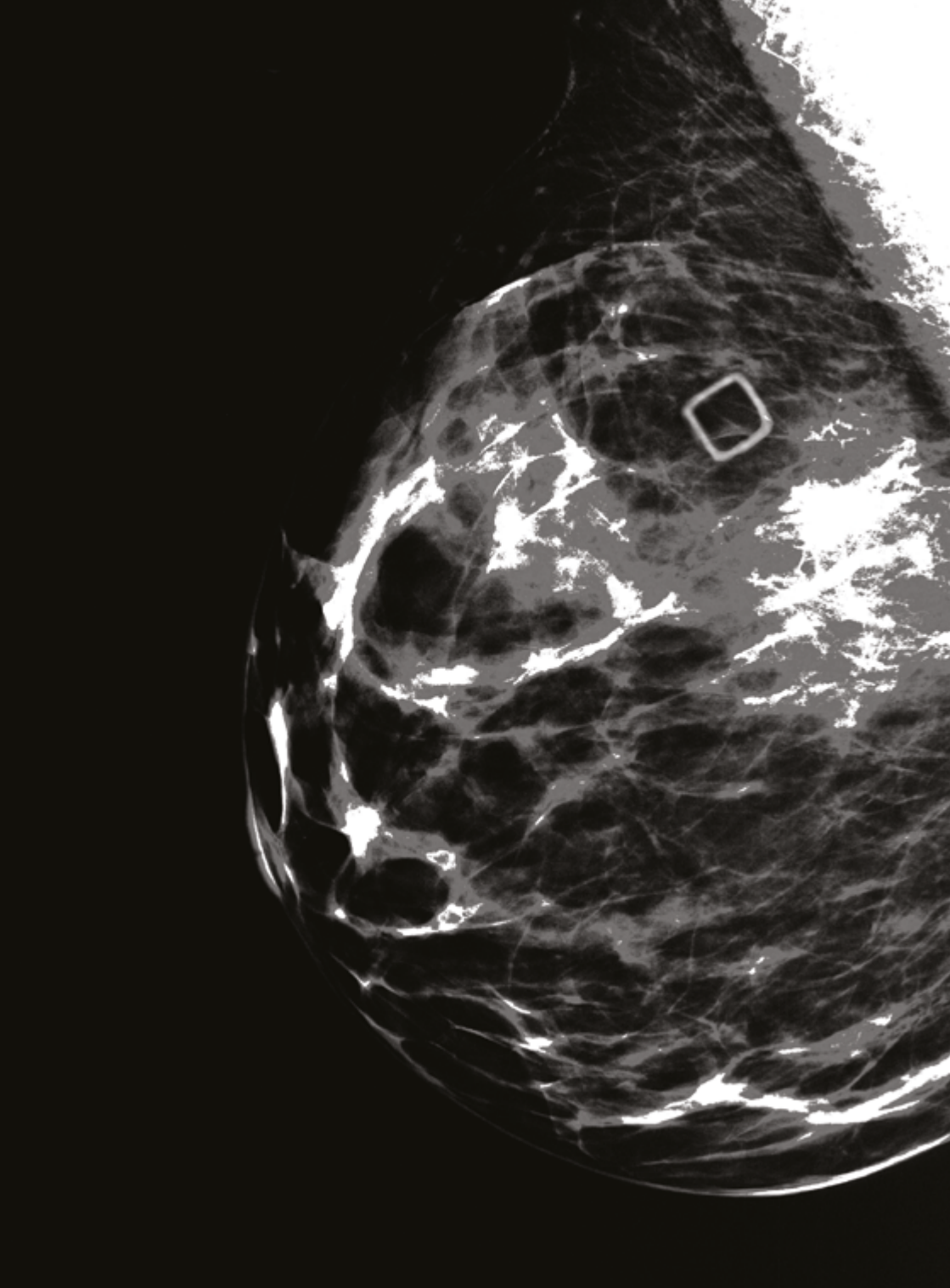
- Routine scar marking aims to eliminate confusion of where a biopsy was performed.
- The surgical history and mammographic findings are more easily correlated; distortion or asymmetry of the local breast architecture can be explained.
- Calcifications found in the area marked with a scar marker can be examined relative to their location at the biopsy site.
- Routine and consistent placement of the scar marker will assure that a reference point to the original surgery is maintained from year to year.



# Beekley **A-SPOT**® PALPABLE MASS MARKERS

## How does a palpable mass marker remove doubt?

- The triangular shape (the international symbol for warning) immediately directs attention to the area of concern on the image without hiding or blending in with calcifications.
- A correlation is established between the physical findings of what is palpated in comparison to what is seen on the image.
- The presence of the palpable mass marker on the image provides documentation that the palpable abnormality is included on the film.
- Becomes a permanent record on the patient's image, documenting the area of concern.



**Beekley ALTUS®**

## AREA OF CONCERN OR PAIN MARKER

**Why use a square to mark non-palpable areas of concern or focal pain?**

- Eliminate confusion on the area being marked with the new square shape.
- Provide permanent documentation since history charts can sometimes get lost.
- Facilitate faster read time with immediate identification of the area in question.

# The Beekley Difference

Beekley Medical invests heavily in the research and development of new products to meet your needs and the demands of today's more sophisticated equipment and technologies such as markers specifically for full field digital mammography and digital breast tomosynthesis.

All Beekley products are lead-free, latex-free and hypoallergenic for your safety and that of your patients. Beekley products are backed by a 100% satisfaction guarantee.

Beekley is represented in the UK and Ireland by OIS: Oncology Imaging Systems Ltd. OIS is a forward-thinking medical device company dedicated to providing the best products and the best customer service to the medical imaging, radiotherapy and medical physics communities. Our ethos is based upon the patient first philosophy backed up by leading customer service.



# BEEKLEY MEDICAL™

*when your diagnosis must be right™*

*Manufactured by Beekley Corporation. OIS is the distributor for Beekley in the UK & Ireland.  
BEEKLEY, BEEKLEY MEDICAL, BEEKLEY SKIN MARKING SYSTEM, SPOT, and WHEN YOUR DIAGNOSIS MUST BE RIGHT  
are Reg. U.S. Pat. & Tm. Off. BEEKLEY and SPOT are Registered Community Trademarks.*

*All Beekley products are lead-free, latex-free and hypo-allergenic, and 100% guaranteed to perform as promised!*



+44 (0) 1825 840633  
sales@oncologyimaging.com  
www.oncologyimaging.com