



Access™ Breast Treatment Devices

OIS

Oncology Imaging Systems

Access Supine Breast Devices

The innovative Access™ Supine is a lightweight, one piece device designed to comfortably treat both breast and lung patients. The angulation ladder system quickly and securely indexes patients at 0, 5, 7.5, 10, 12.5 and 15 degree angles.



ROBUST AND COMFORTABLE DESIGN

The Access™ Supine positions the patient's chest and thorax for external beam radiotherapy. The ladder system secures the backrest at various angles while the tailbone pad and bottom stopper comfortably support the patient for the duration of imaging and treatment.

- The backrest lays flat, indexing at zero degrees, for lung treatments.
- Accessories fix securely to the device and can remain in place for storage.
- Ladder system indexes patients at 0°, 5°, 7.5°, 10°, 12.5° and 15° angles.
- 249kg weight limit

ADJUSTABLE ARM AND WRIST SUPPORTS

Adjustable Arm and Wrist Supports position the patient's arms out of the treatment field while exposing the chest for breast and nodal imaging and treatment. The ability to customise each patient's arm and wrist position helps to increase comfort for patients with incisions while minimising skin folds.

Access™ Supine BREAST & LUNG DEVICE

The carbon fibre Access™ Supine Breast & Lung Device is available with a homogenous backrest, or a grid backrest to minimise attenuation.



MR Access™ Supine BREAST & LUNG DEVICE

The Access™ Supine MR Breast & Lung Treatment Device is CT, MR and treatment compatible for enhanced imaging through treatment options. This supports geometric accuracy, ensuring imaging is performed in exactly the same position for both simulation and treatment.



Access Supine Accessories

ArmShuttle™ Elite WING BOARD

The ArmShuttle™ Elite allows for the full arms up positioning technique. The device is lightweight and both CT and MR compatible. Multiple head rest positions allow for additional head and arm positioning flexibility while the ribs of the shuttle index vacuum cushions for enhanced reproducibility. The ArmShuttle Elite easily attaches to the Access Supine, or can be utilised as a standalone device.



Portrait™ HEAD & NECK THERMOPLASTIC ADAPTERS

The Portrait™ Head and Neck thermoplastic adapters allow the Access™ Supine to be used for head and neck treatments for patients that are unable to lay flat. The Portrait Head Only Adapter is supplied with mounting provisions for a chin strap.



Access™ Supine ARM & WRIST SUPPORTS

- Turn knob allows quick and rigid indexing of the Arm Support
- Wrist Supports rotate and are height adjustable
- Pads are easily removed for cleaning



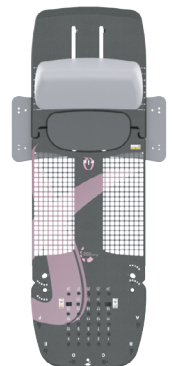
Access™ Supine ACCESSORY LADDER SET

Optional Accessory Ladder Set elevates the backrest to 20° and 25° angles.



WALL MOUNT

The Wall Mount is an ideal way to store your Access™ Supine Device. Accessory Ladders can be stored behind the breast board on the wall mount.

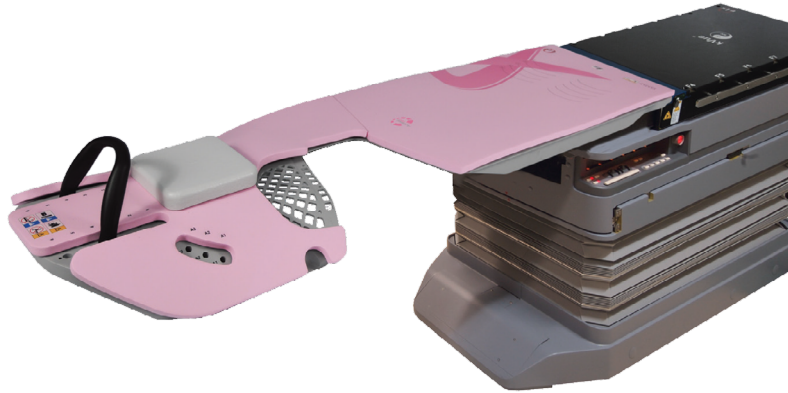


Access Prone Breast Devices

Due to its potential to significantly reduce dose to heart and lung, prone breast positioning is becoming an important option in the treatment of breast cancer.

kVue™ Access 360™ PRONE BREAST INSERT

The kVue™ Access 360™ is designed to allow breast cancer treatment for both left and right breast, including whole breast, partial breast and accelerated breast treatments. The sleek, cantilever design provides both oblique and non-coplanar access, potentially enabling higher dose per fraction. Since the beam path is primarily through the breast with minimal couch top interference, artifacts and scattering may be minimised.

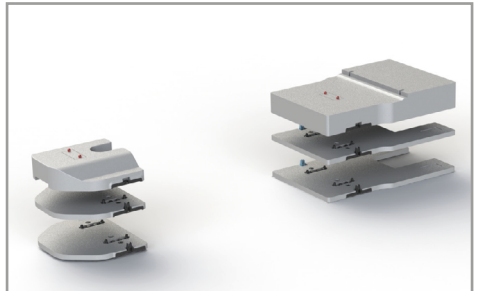
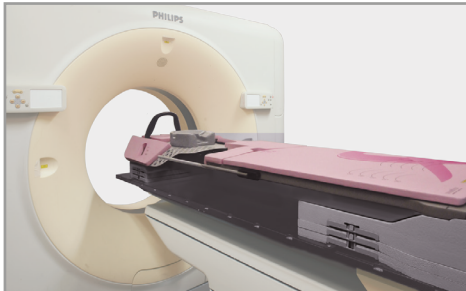


ALIGNMENT

- Virtual Indexing™ provides confirmation of patient alignment
- Ipsilateral scale provides an additional point of reference for laser alignment
- Knee alignment marks aid in patient positioning for daily set-up

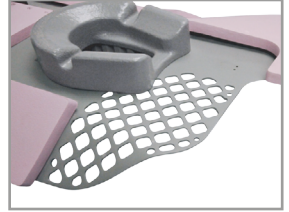
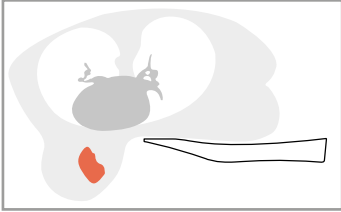
CT SIMULATION

CT Risers allow the kVue™ Access 360™ Prone Breast Insert to be used for both simulation and treatment.



EXPANDED SUPRACLAVICULAR ACCESS

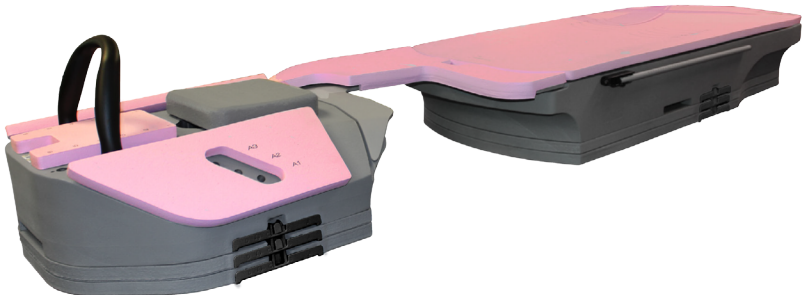
The thinner, wider grid window in the Access 360™ provides full access to treat the supraclavicular nodes. The supraclavicular access allows patient treatment to be accomplished in one set-up if desired.

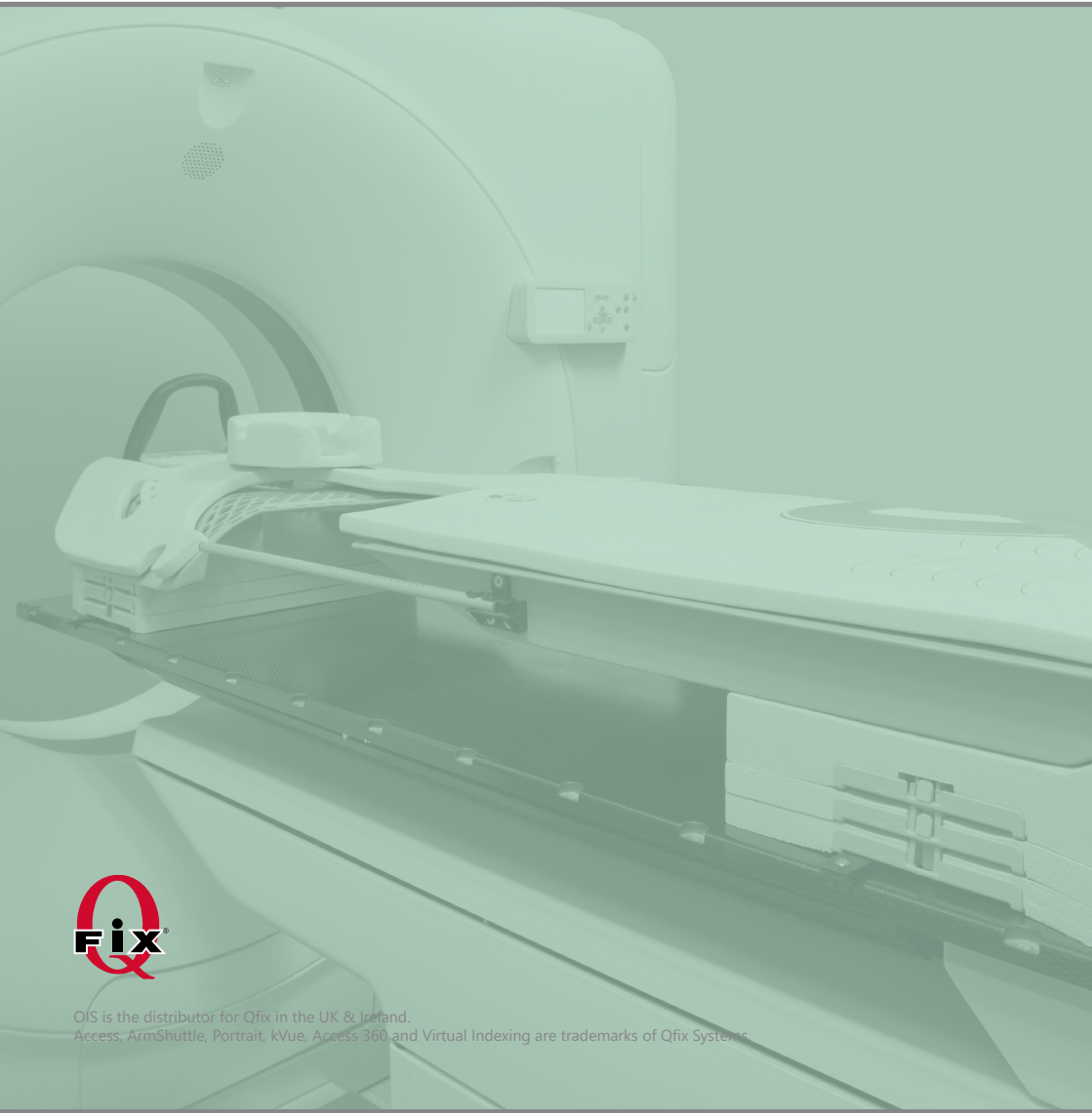


Access™ Prone BREAST DEVICE

The Access™ Prone is a standalone breast treatment device. A removable insert can be positioned for either left or right breast treatment. The device is both CT and MR compatible enabling a seamless transition from simulation through treatment.

- Easy set-up
- Indexes to the couch top using a 2-pin locating bar
- Open access treatment
- Designed for patient comfort
- Incremental 2.5 cm shims allow variable height
- Contralateral scale aligns with Virtual Indexing for laser alignment
- Ipsilateral scale swings out of the way for treatment
- Internal hand grip accessory compartments for convenient storage





OIS is the distributor for Qfix in the UK & Ireland.
Access, ArmShuttle, Portrait, kVue, Access 360 and Virtual Indexing are trademarks of Qfix Systems



+44 (0) 1825 840633
sales@oncologyimaging.com
www.oncologyimaging.com