

# MRI Laser Systems for Radiotherapy



Oncology Imaging Systems

# State of the art laser systems for patient positioning and marking in MRI

For more than 30 years the characteristic features of LAP laser systems have been sophisticated technology, quality and design. This level of excellence has made LAP the global market leader for patient alignment in radiotherapy. With our dedicated technology for MRI we are now setting standards with the world's only certified MR conditional laser systems.

Precise patient marking, accurate planning and exact positioning are key factors for a successful treatment. Our laser systems support this crucial and important marking process. In order to be able to utilise the advantages of additional imaging by means of MRI in RT, a precise and reproducible patient position on both imaging modalities - CT and MRI - is essential.

The design and technology of each component is specifically designed for use in the MRI environment. Certified by an independent testing facility, DORADOnova MR3T and APOLLO MR3T are the world's only laser systems for patient alignment which fulfill MRI conditional requirements up to 3 Tesla. Continuous in-house research and development is a cornerstone of qualification for the certificate.



THREE PROJECTION  
COLOURS:  
RED, GREEN, BLUE

REMOTE  
CONTROLLED  
LASER  
ADJUSTMENT

CERTIFIED MR  
CONDITIONAL  
UP TO 3T

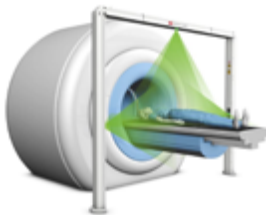
## Our systems at a glance



**APOLLO MR3T**

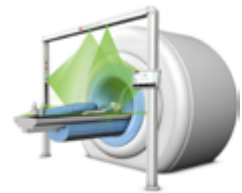
Fixed crosshair laser for  
patient positioning at MRI

Suitable for Wall, Floor or  
Ceiling mounting



**APOLLO MR3T Bridge**

Laser bridge with three fixed  
crosshair lasers for patient  
positioning in MRI



**DORADOnova MR3T**

Laser bridge with three  
movable and fixed lasers  
for patient positioning  
and marking in MRI

# LAP APOLLO MR3T LASER SYSTEM

The APOLLO MR3T is a fixed laser for patient positioning in a magnetic environment, such as MRI or MR Linac rooms. Comprising three (optionally four) lasers for the coronal, sagittal and transversal body planes. An optional fourth laser prevents shadowing from the LINAC gantry.



## SCOPE OF DELIVERY

- LAP APOLLO MR3T MR-conditional room laser
- Adjustable tilting brackets
- Remote control
- Central power supply

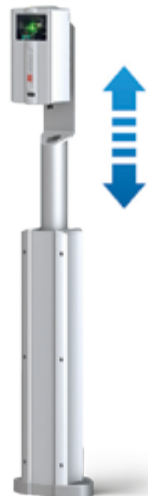


### Laser Adjustment

- Shift, tilt rotation
- Focus

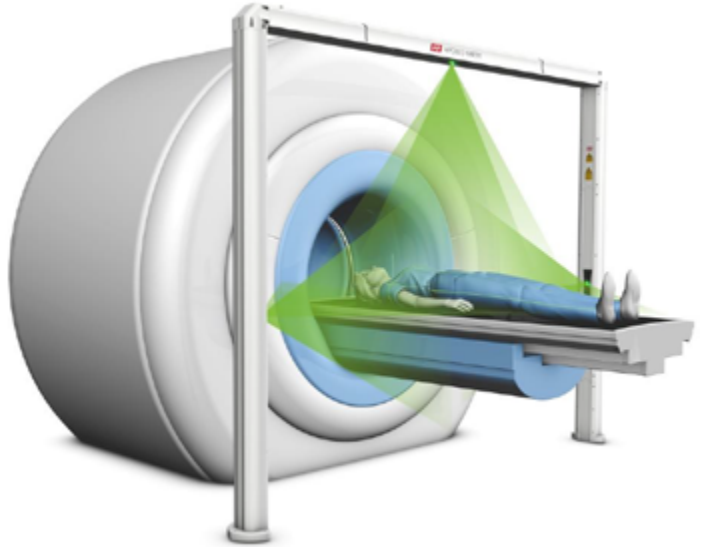
## OPTIONS

- Adjustable height, floor mounted MR-conditional column (post)
- AQUARIUS phantom



# LAP APOLLO MR3T BRIDGE LASER SYSTEM

The APOLLO MR3T bridge is a fixed laser for patient positioning in a magnetic environment, such as MRI or MR Linac rooms. The laser bridge consists of three fixed crosshair laser modules with a choice of red, green or blue laser lines. The bridge construction provides a mechanically stable set up without the need for any wall or ceiling mountings inside the Faraday cage.



## SCOPE OF DELIVERY

- LAP APOLLO MR3T MR-conditional laser bridge
- Remote control
- Power Supply Unit
- Cable set

## OPTIONS

- AQUARIUS phantom

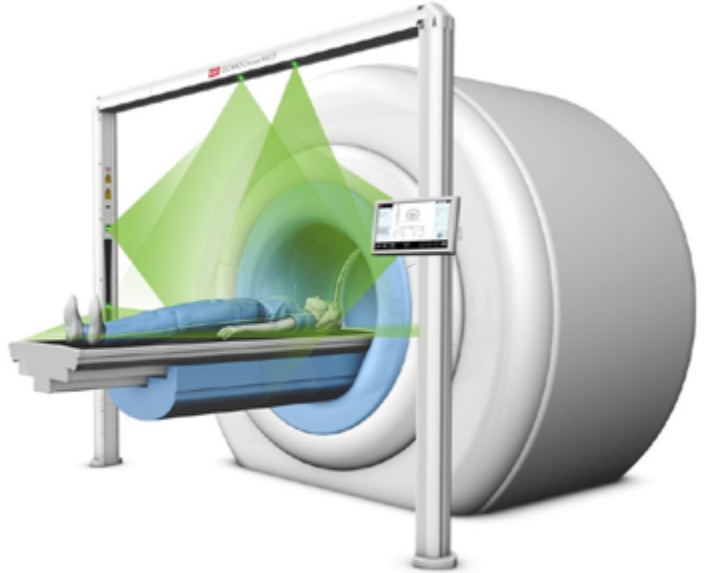


### Laser Adjustment

- Shift, tilt rotation
- Focus

# LAP DORADOnova MR3T MOVING LASER SYSTEM

The DORADOnova MR3T is an MR-conditional laser system with a combination of fixed and movable lasers. This system supports an MR-only workflow for patient marking as well as CT/MR fusion. The lasers project lines on three body planes for marking the patient during MR simulation. The integrated CARINAnav laser control provides easy control of the lasers.



## SCOPE OF DELIVERY

- LAP DORADOnova MR3T MR-conditional laser bridge
- 15.6" touch screen
- Computer with laser control software CARINAnav
- Remote control
- Power Supply Unit
- Cable set + interface converters

## OPTIONS

- AQUARIUS phantom

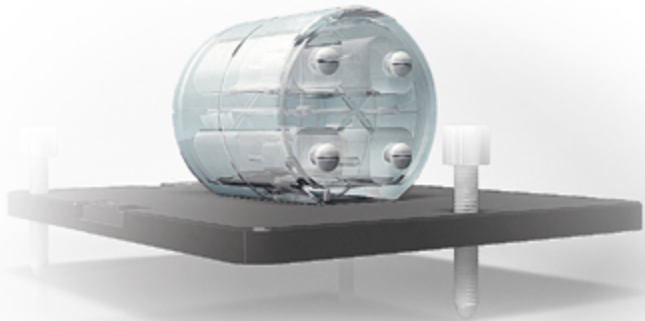


### Laser Adjustment

- Shift, tilt rotation
- Focus

# LAP AQUARIUS MRI LASER ALIGNMENT PHANTOM

The AQUARIUS MRI phantom is a laser alignment phantom to be used in conjunction with LAP lasers in an MRI environment. The phantom is independent of the laser system and the MRI so any combination of the two are supported. AQUARIUS MRI phantom from LAP allows for easy alignment of external lasers to the MRI central axis. An enhanced spot shows the central point in all views plus alignment in each axis including pitch and yaw.



## SCOPE OF DELIVERY

- AQUARIUS phantom
- Levelling plate
- Copper sulfate solution



LAP APOLLO MR3T, LAP APOLLO MR3T Bridge, LAP DORADOnova, CARINAnav and AQUARIUS are registered trademarks of LAP GmbH Laser Applikationen.

OIS is the distributor for LAP GmbH in the UK & Ireland.



+44 (0) 1825 840633  
sales@oncologyimaging.com  
www.oncologyimaging.com